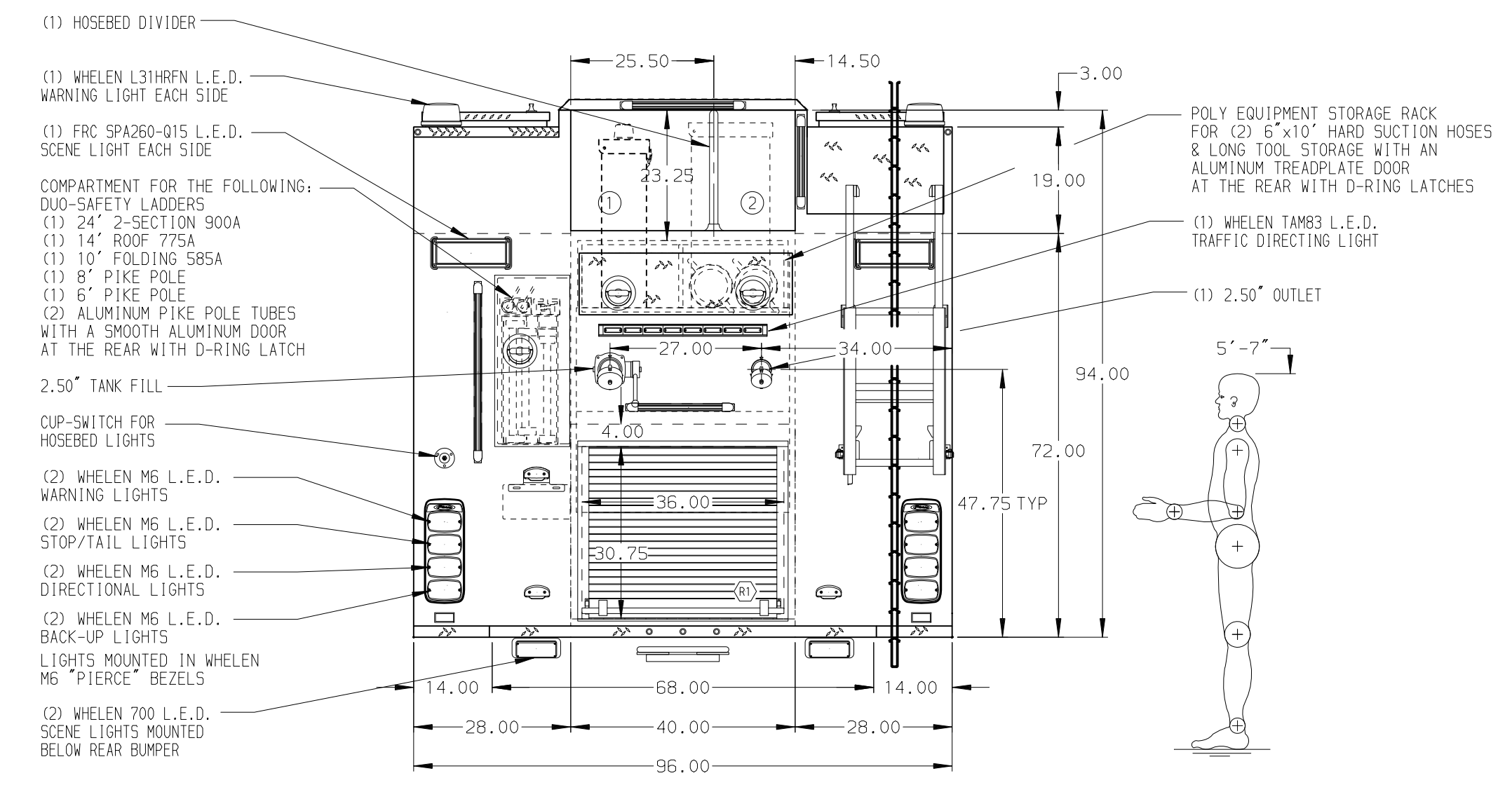


HOSEBED CAPACITIES

① - 1000' OF 5.00" HOSE

② - 400' OF 2.50" HOSE



ALUMINUM BODY

MAXIMUM O.A.H. 125"

- NOTE
- DIMENSIONS SHOWN ARE APPROXIMATE AND ARE SUBJECT TO MINOR DEVIATIONS AS MAY OCCUR OR BE NECESSARY IN CONSTRUCTION. MINOR DETAILS NOT SHOWN.
- ONSPOT AUTOMATIC TIRE CHAINS TO BE PROVIDED AT REAR
 - AIR INLET WITH KUSSMAUL AIR EJECT LOCATED ON D5 STEP WELL
 - BATTERY CHARGER LOCATED IN COMPARTMENT D3
 - BATTERY CHARGE INDICATOR LOCATED ON DRIVER'S SEAT RISER
 - ONE ADJUSTABLE FULL WIDTH/DEPTH SHELF IN COMPARTMENT D1, D3, P3, R1, TWO IN P1
 - ONE FLOOR MOUNTED UTILITY TWO WAY SLIDE-OUT TRAY IN COMPARTMENT D1 & P1
 - ONE FLOOR MOUNTED SLIDE-OUT TRAY IN COMPARTMENT P3
 - SWING-OUT TOOL BOARD WITH PEGBOARD PATTERN IN COMPARTMENT D2
 - ALUMINUM PEGBOARD WITH TRACKS ON THE REAR WALL OF COMPARTMENT D2 & D3
 - CIRCUIT BREAKER PANEL IN COMPARTMENT D3
 - ONE HANNAY ELECTRIC REWIND CORD REEL MODEL 1618-17-18 LOCATED IN HATCH COMPARTMENT ABOVE D3 & P3 WITH 200' OF 10/3 CABLE

| CUSTOMER APPROVAL | | | | Pierce MANUFACTURING INC. | | JOB NO. | 31346 |
|--------------------|--|--|--|---------------------------|--|-----------|--------|
| APPROVED BY: _____ | | | | | | SCALE | 1:24 |
| DATE: _____ | | | | | | DATE | |
| CHASSIS DATA | | | | TITLE | 1500-D-750P W/20G FOAM CELL, 171" FH&D F&R PUMPER (3) X LAYS, DELUGE, GENERATOR, HUSKY 3, EQUIPMENT RACK | | |
| MAKE | | | | FOR | BAINBRIDGE FIRE DISTRICT BAINBRIDGE, NEW YORK | | |
| PIERCE | | | | DWG NO. | 31346AD | | |
| MODEL | | | | REV | 14JUN17 | AMI | - |
| ENFORCER | | | | DATE | BY | CH | |
| | | | | CHECKED BY | WKL | 09JUN17 | |
| | | | | SHEET SIZE | D | SHEET NO. | 1 OF 1 |